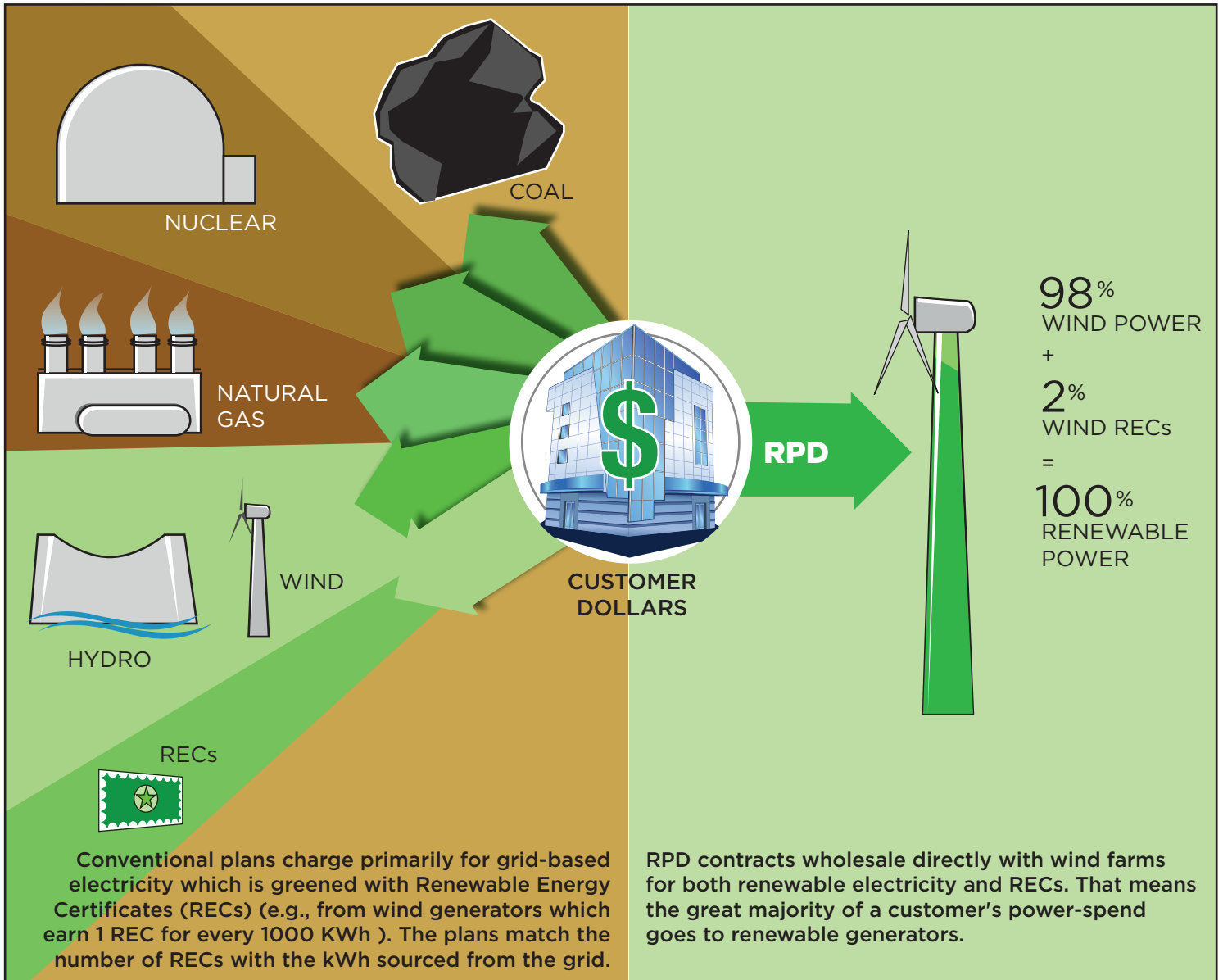
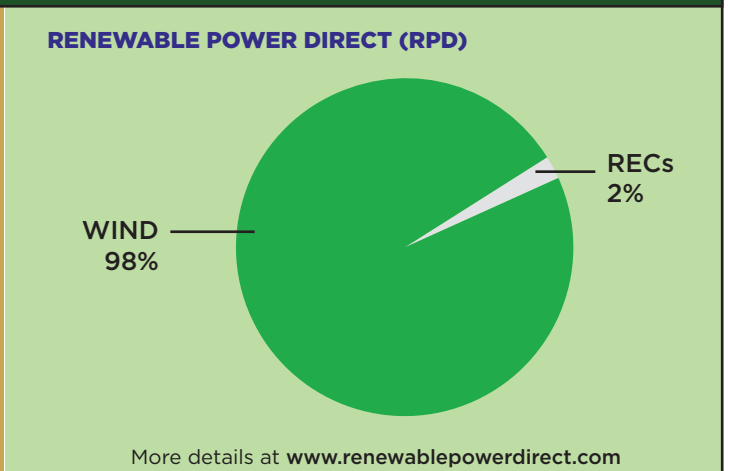
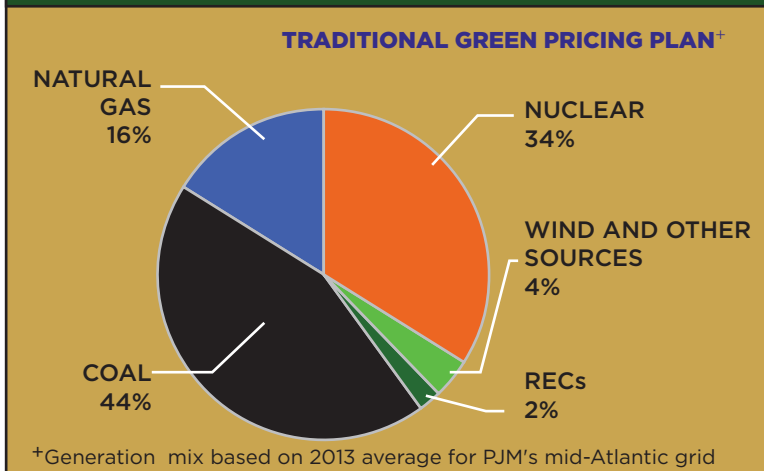


BUYING GREEN POWER? FOLLOW THE MONEY.

CONVENTIONAL PLANS VS. RENEWABLE POWER DIRECT - RPD™



CLEAN POWER BY THE NUMBERS



*Charts include cost of electricity plus RECs only and exclude administrative, transmission, delivery, and any necessary balancing charges, which generally account for up to approximately 25% of a consumer's electricity bill. RECs are assumed to add 2% to total power costs so that a customer paying 10 ¢/kWh for a standard plan would pay 10.2 ¢/kWh for a green pricing plan.